



**We Raise The Bar!**



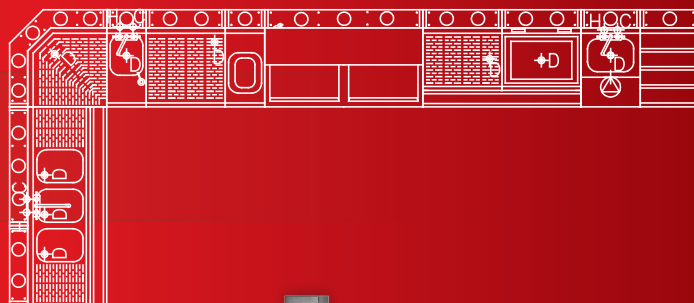
ROYAL SERIES

# We Raise the Bar, Let Us Build Yours.

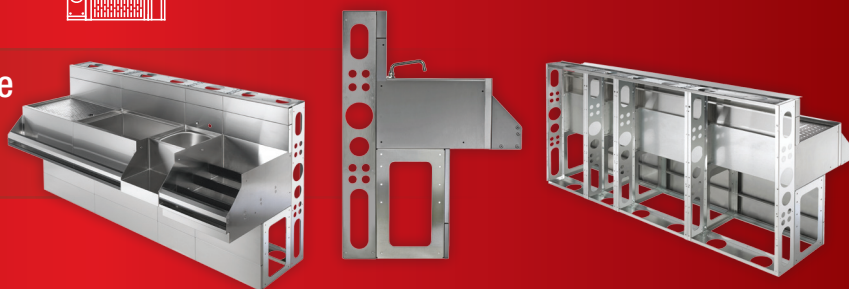
**1** Send us a CAD drawing or overall dimensions of the bar to [quotes@krowne.com](mailto:quotes@krowne.com). Our sales representative will visit the job site if desired.



**2** We will prepare a complete layout and design and send with a quotation.



**3** Once approved, we will manufacture at the factory and ship in sections to cut down on installation time.



**4** You receive...



Bar Top Not Supplied by Krowne

## The Ultimate Underbar

**Built to First Class Specifications**

Outstanding features of our modular underbar are the elimination of all legs and a bar wall structure that has chaseways built inside to hide plumbing, electric, beer and soda lines. These features along with removable stainless panels on the bartender side, and the ability to make the panels on the customer side removable are the next generation in bar design. The results are a sleek, neat style that look first class and is easy to keep clean.



100 Haul Road  
Wayne, NJ 07470

Phone: 800-631-0442  
Fax: 973-872-1129

[sales@krowne.com](mailto:sales@krowne.com)  
[krowne.com](http://krowne.com)



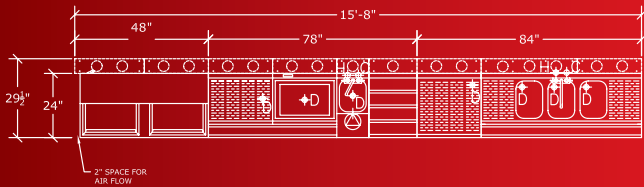
**We Raise The Bar!**



# We Don't Just Build Bars... We Design Them!

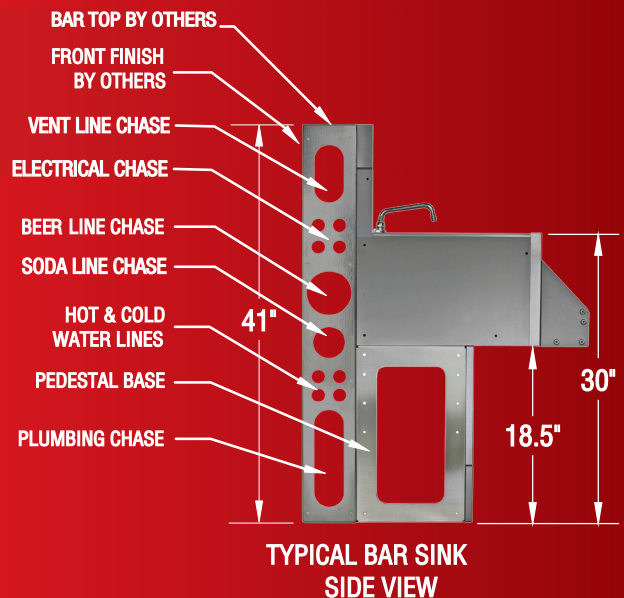


Simply contact us and we will provide an AutoCAD drawing and quote. We recommend using our easy step-by-step quote request form that is available on our website at [krowne.com/quote-request](http://krowne.com/quote-request) or e-mail quotation requests and layouts to [quotes@krowne.com](mailto:quotes@krowne.com)



## Outstanding Features of our Modular Bar Die

- Pre-assembled at factory to cut installation time
- All underbar equipment is mounted to bar die wall to eliminate the need for legs
- Fast and easy to install complete bar at job site
- Panels are removable from front and back for easy access
- Designed to allow bar die to be sealed to the floor
- Allows contractor to build bar top and front panels in advance and install when installation of equipment is complete
- Built-in chaseways hide plumbing, electric, soda and beer lines
- Optional electrical outlets



100 Haul Road  
Wayne, NJ 07470

Phone: 800-631-0442  
Fax: 973-872-1129

[sales@krowne.com](mailto:sales@krowne.com)  
[krowne.com](http://krowne.com)