

A LUXURY PLUMBING COLLECTION

DIAMOND™

series



KROWNE®

- PRE-RINSES
- MANUAL FAUCETS
- ELECTRONIC SENSOR FAUCETS
- ROTARY WASTE VALVES

A LUXURY PLUMBING COLLECTION

DIAMONDTM series

Krowne's Diamond Series collection is the obvious choice when quality and design are your top priority. Every Diamond Series product is precisely engineered and manufactured using premium components to create a durable and lasting solution supported by an industry leading lifetime warranty.



DIAMOND SERIES OFFERINGS:

- Wall/Deck Mount Pre-Rinses
- Wall/Deck Mount Manual Faucets
- Wall Mount Electronic Sensor Faucets
- Rotary Waste Valves

DETAILS MATTER.

As a family-owned company for over 75 years, we take personal pride in the process of researching, developing, and releasing innovative products to our growing industry.

The launch of the Diamond Series product line brings premier performance to the kitchen while integrating unique designs & finishes.



INDUSTRY LEADING LIFETIME WARRANTY

Cutting-edge engineering and world-class components allow us to offer an industry first lifetime warranty on all Diamond Series products.



SLEEK AESTHETIC WITH ULTRA-POLISH SATIN FINISH

Sharp contrasting lines blended with a bright satin finish creates a modern captivating design.



1/4 TURN HIGH PERFORMANCE STAINLESS STEEL CERAMIC CARTRIDGE VALVES WITH INTEGRAL CHECK

Engineered and rigorously tested to execute over 2 million turns at optimal performance.



INTEGRAL SMOOTH-SPIN SWIVEL

Multi-spray functionality on our Diamond Series Spray Head.



ALL ACCESSORIES INCLUDED

High quality install kits packaged with all Diamond Series faucets and pre-rinses for simple installation.

DIAMOND SERIES PRE-RINSE UNITS

STAINLESS STEEL HYPERFLEX > REINFORCED HOSE

Extends lifespan

INTEGRAL SMOOTH-SPIN SWIVEL >

Prevents tension build up on hose

DURA-SPRING >

Increased coils
reduces stress on hose

WALL BRACKET >

Fully adjustable

VARIABLE SPRAY PATTERN >

Rotate spray head for different spray style

ULTRA-POLISH SATIN FINISH >

DUAL SPRAY TECHNOLOGY

KNIFE PATTERN

Wide, fan-like pattern for large surface areas

SHOWER PATTERN

Tight, high-powered shower pattern for tough grime

DIAMOND SERIES PRE-RINSE UNITS

Features apply to all Diamond Series Pre-Rinse Units

- Dual Spray Technology
- Ultra-polish satin finish on solid brass base
- 1/4 Turn high performance stainless steel ceramic cartridge valves with integral check
- 1.15 GPM spray head
- Includes wall bracket
- Pre-assembled to cut installation time



8" CENTER WALL MOUNT PRE-RINSE

- 8" centers
- 1/2" NPT female inlets
- 35" high with 15" overhang
- Mounting kit & flexible water lines included

Model
DX-108



8" CENTER WALL MOUNT PRE-RINSE WITH ADD-ON FAUCET

- 8" centers
- Add-on faucet with 12" spout
- 1/2" NPT female inlets
- 38" high with 15" overhang
- Mounting kit & flexible water lines included

Model
DX-109



8" CENTER WALL MOUNT PRE-RINSE WITH ADD-ON FAUCET LESS SPOUT

- 8" centers
- Add-on faucet less spout
- 1/2" NPT female inlets
- 38" high with 15" overhang
- Mounting kit & flexible water lines included

Model
DX-109-X



SINGLE HOLE DECK MOUNT PRE-RINSE

- 1-1/8" OD x 2-1/4" shank
- Fits in 1-1/4" single hole
- 35" high with 15" overhang
- 13" water lines with 3/8" compression fittings

Model
DX-202

DIAMOND SERIES PRE-RINSE REPLACEMENT PARTS



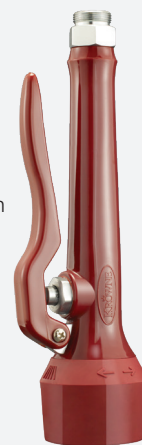
No.	Model	Description
1	DX-133	44" Hose
2	DX-162	Spring
3	DX-129	1.15 GPM Spray Head
4	DX-171	Spray Head Handle with screws
5	DX-322	Button Valve
6	DX-165	Hook
7	DX-161	Spring Retainer
8	DX-160	18" Riser Pipe
8	DX-160-24	24" Riser Pipe
9	DX-137	Wall Bracket
	DX-166	Repair Kit for Spray Head (Shower Pattern)
	DX-179	Repair Kit for Spray Head (Knife Pattern)

1.15 GPM SPRAY HEAD

- Dual Spray technology featuring two spray patterns
 - **Shower Pattern** - tight, high-powered shower pattern for tough grime removal
 - **Knife Pattern** - wide, fan-like pattern for large surface area rinsing
- 360° smooth-swivel functionality
- Ergonomic handle
- Durable valve for extended longevity

Model
DX-129

DUAL SPRAY
TECHNOLOGY



ADD-ON FAUCETS

- 3/8" NPT Male inlet
- 3/8" NPT Female outlet
- Turns on and off without obstruction



Model	Add-On Faucet Spout Size
DX-138	6" Swing Spout
DX-149	8" Swing Spout
DX-139	12" Swing Spout
DX-140	14" Swing Spout
DX-141	16" Swing Spout
DX-1XX	Base Only (No Spout)

PRE-RINSE FAUCET BASES



Model	Description
DX-208	8" Center Pre-Rinse Base
DX-201	Single Hole Pre-Rinse Base

DIAMOND SERIES FAUCETS

Features apply to all Diamond Series Faucets

- Ultra-polish satin finish on solid brass base
- 1/4 turn high performance stainless steel ceramic cartridge valves w/ integral check
- 1.8 GPM aerator installed
- Durable full range swing spout with double o-ring construction
- Lever handles
- Mounting kit & flexible water lines included



DX-601

SINGLE HOLE DECK MOUNT FAUCETS

- Fits 1-1/4" single hole
- 1-1/8" OD x 2-1/4" shank
- 20" water lines with 3/8" compression fittings

Model	Spout Size
DX-601	6"W Double Bend
DX-602	8-1/2"W Double Bend
DX-625	4-1/2"W Double Bend
DX-6XX	Faucet Body (No Spout)



DX-310

4" CENTER DECK MOUNT FAUCETS

- 1/2" NPS male inlets on 4" centers

Model	Spout Size	Model	Spout Size
DX-306	6" Swing	DX-316	16" Swing
DX-308	8" Swing	DX-301	6"W Double Bend
DX-310	10" Swing	DX-302	8-1/2"W Double Bend
DX-312	12" Swing	DX-325	4-1/2"W Double Bend
DX-314	14" Swing	DX-3XX	Faucet Body (No Spout)



DX-410

4" CENTER WALL MOUNT FAUCETS

- 1/2" NPS male inlets on 4" centers

Model	Spout Size	Model	Spout Size
DX-406	6" Swing	DX-400	4-1/2"W Double Bend
DX-408	8" Swing	DX-401	6"W Double Bend
DX-410	10" Swing	DX-402	8-1/2"W Double Bend
		DX-4XX	Faucet Body (No Spout)



DX-910

8" CENTER RAISED DECK MOUNT FAUCETS

- 1/2" NPS male inlets on 8" centers

Model	Spout Size	Model	Spout Size
DX-906	6" Swing	DX-916	16" Swing
DX-908	8" Swing	DX-918	18" Jointed
DX-910	10" Swing	DX-901	6"W Double Bend
DX-912	12" Swing	DX-902	8-1/2"W Double Bend
DX-914	14" Swing	DX-9XX	Faucet Body (No Spout)



DX-810

8" CENTER WALL MOUNT FAUCETS

- 1/2" NPT female inlets on 8" centers

Model	Spout Size	Model	Spout Size
DX-806	6" Swing	DX-816	16" Swing
DX-808	8" Swing	DX-818	18" Jointed
DX-810	10" Swing	DX-801	6"W Double Bend
DX-812	12" Swing	DX-802	8-1/2"W Double Bend
DX-814	14" Swing	DX-8XX	Faucet Body (No Spout)

DIAMOND SERIES REPLACEMENT PARTS

SWING SPOUTS

- Built for high volume
- Double o-ring construction
- Ultra-polish satin finish



Model	Spout Size
DX-420	6" Swing Spout
DX-421	8" Swing Spout
DX-422	10" Swing Spout
DX-423	12" Swing Spout

Model	Spout Size
DX-424	14" Swing Spout
DX-425	16" Swing Spout
DX-426	18" Jointed Spout

DOUBLE BEND GOOSENECK SPOUTS

- Built for high volume
- Double o-ring construction
- Ultra-polish satin finish



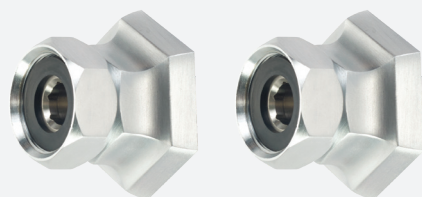
Model	Spout Size
DX-430	4-1/2" Double Bend Gooseneck
DX-431	6" Double Bend Gooseneck
DX-432	8-1/2" Double Bend Gooseneck



1/4 TURN HIGH PERFORMANCE CERAMIC CARTRIDGE VALVES

- Fits all Diamond Series faucets
- Integral check valve
- Stainless steel construction
- Fully assembled, easy to install

Model	Description
DX-708	Cold Valve
DX-709	Hot Valve



COUPLING FLANGES

- Fits all Diamond Series faucets
- Flange seal technology
- Eccentric fittings
- Includes nipples
- 1/2" NPT female inlet
- 1/4" adjustment per flange
- Two rubber washers



Model	Description
DX-100	Includes 2 Flanges



DIAMOND SERIES COMPLETE MOUNTING KIT

- (2) 3/8" Stainless steel braided flexible supply hoses, 30"L
- Includes 1/2" NPT close elbows w/ swivel compression fittings on faucet side & 3/8" compression fittings on water supply side
- (2) 1/2" NPS nipples, (2) washers & (2) lock nuts
- No soldering or teflon tape required

Model	Description
21-445L	Diamond Series Mounting Kit

DIAMOND SERIES ELECTRONIC FAUCETS



4" CENTER WALL MOUNT WITH SATIN FINISH

- Infrared sensor operated
- Battery powered control module, (4) AA batteries included, AC adapter optional
- Low battery indicator light
- Easy adjust shut-off delay, auto flush, auto time-out, and range sensitivity
- 1.0 GPM aerator installed
- Includes control module, mechanical mixing valve & (3) supply hoses
- Optional spouts available

Model
16-670

OPTIONAL SPOUTS

Model	Description
21-433L	4-1/2" Satin Finish Double Bend
21-434L	6-1/2" Satin Finish Double Bend

OPTIONAL AERATORS

Model	Description
22-671L	1.0 GPM Honeycomb Aerator
22-672L	2.2 GPM Honeycomb Aerator



SINGLE HOLE WALL MOUNT WITH SATIN FINISH

- Infrared sensor operated
- Battery powered control module, (4) AA batteries included, AC adapter optional
- Low battery indicator light
- Easy adjust shut-off delay, auto flush, auto time-out, and range sensitivity
- 1.0 GPM aerator installed
- Includes control module, mechanical mixing valve & (3) supply hoses

Model
16-675

DIAMOND SERIES ROTOPRO WASTE DRAINS



STAINLESS STEEL 3-1/2" BALL VALVE WASTE DRAINS

- Fits 3-1/2" sink opening
- 1-1/4" overflow outlet with cap
- Stainless steel body
- Stainless steel ball valve
- Includes vandal resistant screw for strainer
- Approximately 2-3 times the drain rate of a conventional lever waste drain

Model	Description
22-850	Stainless Steel Ball Valve Waste Drain
22-850S	Short Handle Stainless Steel Ball Valve Waste Drain



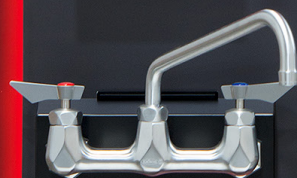
KROWNE®



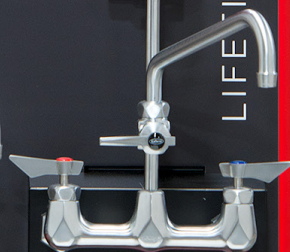
Model DX-100
4" Center Wall Mount Faucet
With 1/2" Double Ball Spout



Model DX-308
4" Center Back Mount Faucet
With 8" Spout



Model DX-812
8" Center Wall Mount Faucet
With 12" Spout



Model DX-109
8" Center Wall Mount Pro-Rise
With 18" Double Ball Spout



LIFETIME WARRANTY

DETAILS MATTER.



DIAMOND™
series

DIAMOND SERIES DISPLAY

WHAT DOES A STOCK ORDER INCLUDE?

- Free Display
- Free Display Products
- Free TV with Product Videos
- Free Freight
- 90 Day Billing
- Special Discount

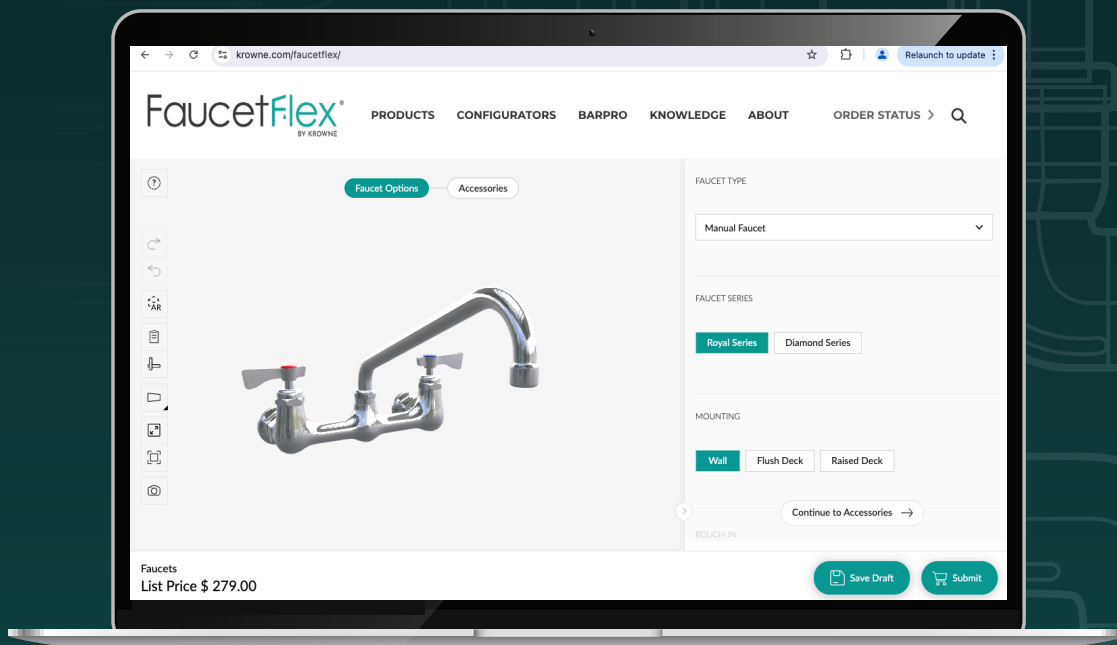
Interested in owning a
Diamond Series Display?



CONTACT US

FaucetFlex™

by Krowne



Configure your faucet to your spec

Instant 3D Renderings • Unlimited Configurations • No Special Software Required

Product Additions

- Pre-Rinse Units
- Electronic Sensor Faucets
- Lavatory Faucets
- Pot Fillers
- Service Sink Faucets
- Plus much more!

Features

- User interface
- Product additions
- Mobile friendly
- Instant spec sheet generation
- Instant price generation
- Built-in savings calculator



Start building at
FaucetFlex.com



krowne.com

100 Haul Rd. Wayne, NJ 07470

☎ 800.631.0442

💬 support@krowne.com

✉ sales@krowne.com

✉ orders@krowne.com